

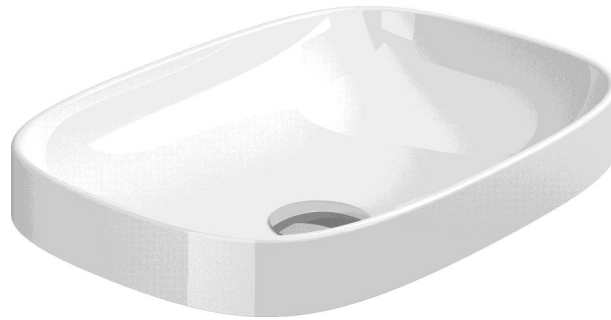
Measurements in millimetres mm

Information updated January 2019

Tel 0345 873 8840

crosswater[™]

KAI S Semi Inset Basin

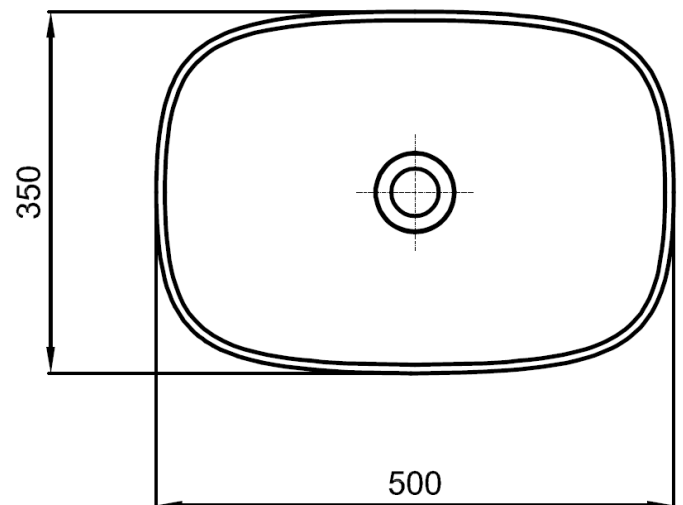
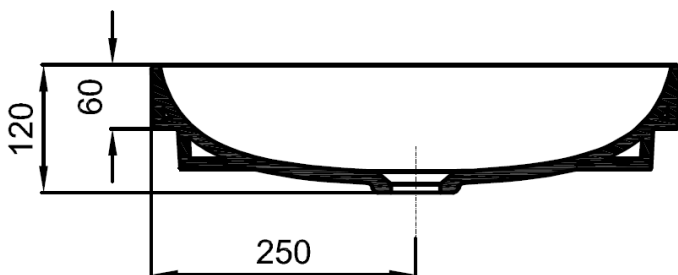


TECHNICAL DATA

CODE No	KLSR01SCW
Recommended use	Domestic, hotel, residential
Material	Vitreous China
Standards	EN 14688 – CL 00
Colour	White only
Specification	No tap hole No overflow
Fixing	Counter mounted
Weight	8kg
Warranty	2 years

SPECIFICATION

Semi inset, drop in basin



Sizes detailed could have a variation of about +/-5 % due to the changes to material characteristics during the firing processes. Exact measurements for individual installations can only be taken from the finished ceramic